



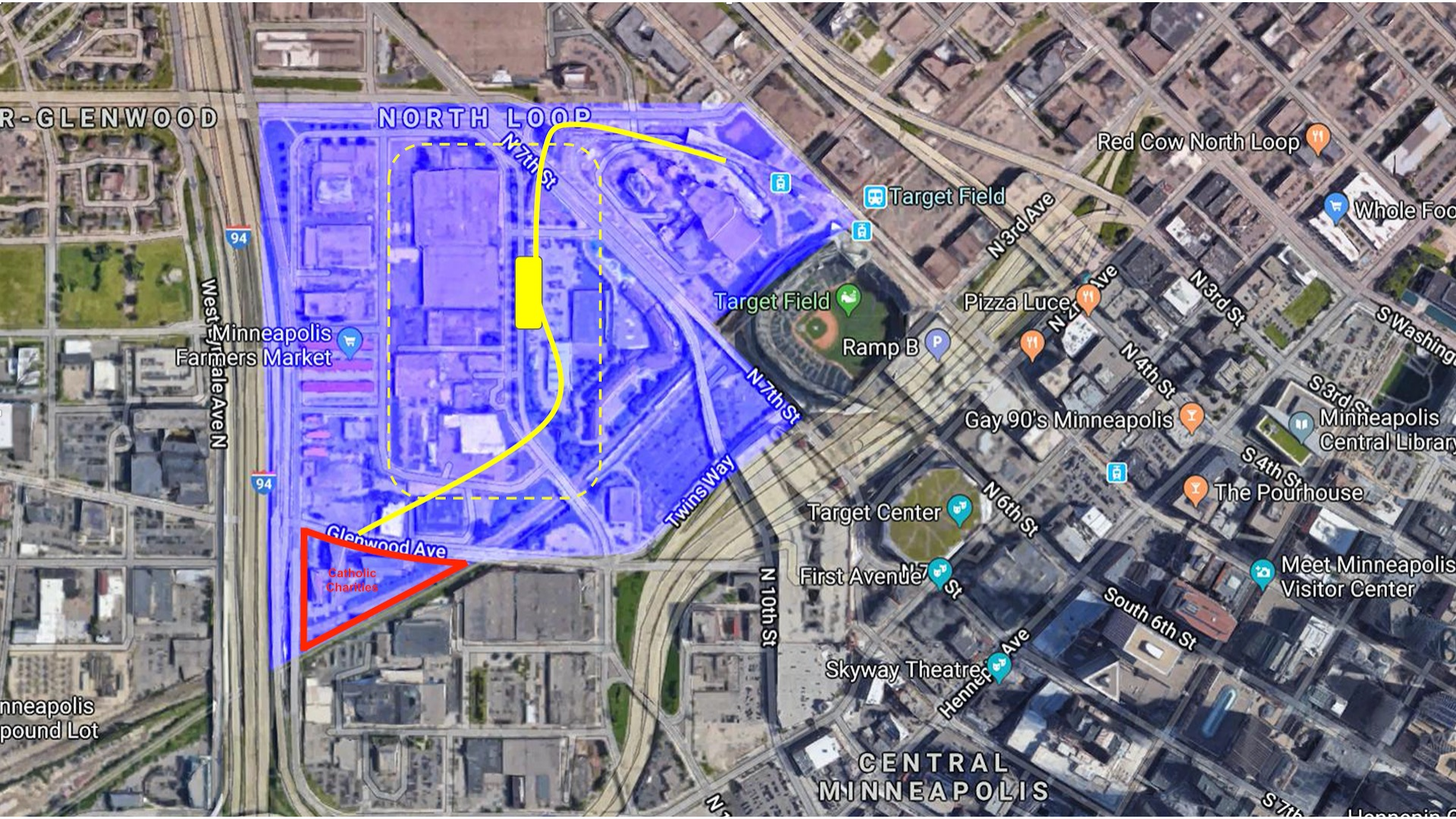
Root District

art.food.culture.

Community Engagement with
Catholic Charities Residents:

- * Higher Ground
- * Glenwood
- * Evergreen





R - GLENWOOD

NORTH LOOP

94

West Nile Ave N

Minneapolis Farmers Market

94

Glenwood Ave

Catholic Charities

N 7th St

Twins Way

N 10th St

Target Field

Target Field

Ramp B

Target Center

First Avenue

Skyway Theatre

CENTRAL MINNEAPOLIS

N 3rd Ave

Pizza Luce

Gay 90's Minneapolis

N 6th St

Hennepin Ave

Red Cow North Loop

Whole Foods

N 3rd St

N 4th St

S 3rd St

Minneapolis Central Library

S 4th St

The Pourhouse

South 6th St

Meet Minneapolis Visitor Center



CATHOLIC CHARITIES
of St. Paul and Minneapolis



Higher Ground Residence

165 Glenwood Ave. N.,
Minneapolis, MN 55405
612-204-8595

- Permanent housing for 85 long-term homeless adults with disabilities, mental illness, chemical dependency and housing barriers.
- Social services provided by Hennepin County,
- St. Stephen's Outreach and Catholic Charities.



Evergreen at the William and Joan Reiling Residences

177 Glenwood Ave. N.,
Minneapolis, MN 55405
612-204-8406

- Permanent single-room occupancy apartment facility for 88 single adults.



Glenwood at the William and Joan Reiling Residences

173 Glenwood Ave. N.,
Minneapolis, MN 55405
612-204-8405

- Permanent housing for 80 adults with severe alcohol and substance use disorders in Hennepin County.



Listening Circle Process

Circle Process:

Introduction, Welcome and Background on Root District

Circle Questions

- 1) What things are important to you when you think about space & place – where you live, where you spend your time?*
- 2) When you think about development or a changing neighborhood, what worries you?*
- 3) What would you hope for in this change?*



Resident Input

- Welcome new nearby development that includes affordable housing for diverse households (families, singles, veterans, people seeking to retire in place and people with disabilities), grocery and convenience stores, restaurants, and walkability to new jobs of many kinds, including entry level.
- Tremendous fear of displacement.
- Wants the entire area to be accessible for people with physical disabilities.



Resident Input

- More public gathering places.
- Deeper relationships with neighbors and more gatherings and events that help neighbors to get to know one another better.
- Seeks improved public safety and security.
- A new community bicycle shop and more bicycle stations.
- When new construction takes place that it considers the health and livability of nearby residents.
- “I want a place that I can call home that is welcoming and safe”



Closing Thoughts

