

NORTH LOOP  
RIVER CONNECTION  
&  
PUBLIC PARK

**The TractorWorks Building, located at 800 Washington Ave. N., is excited to announce that we're partnering with the North Loop Neighborhood Association and the City of Minneapolis Park Board to create an amazing opportunity for our vibrant, growing community.**

**Together, we are developing a public pedestrian park which will include the donated easement of its land, ongoing maintenance, construction management & development in order to provide public green space and much needed access between Washington Avenue and 2<sup>nd</sup> street. With the positive impact the park will bring to the neighborhood and provide for local businesses, restaurants, residents and visitors, we are now focusing our efforts on fundraising.**

**In order to bring this PUBLIC concept to life we need to raise funds to cover the remaining cost of the project. That's where you come in....With a total project cost of just over \$2 million dollars and accounting for funds already generously donated we have only \$740,000 remaining to fundraise.**

**We are teaming up with local developers, businesses and residents to raise the remaining funds. Joining us in leading this charge is the non-profit (501-c3 designated) North Loop Neighborhood Association who are taking a leadership role in fundraising efforts. Every dollar donated to this project will help to develop this park and contribute to the livability and accessibility of the North Loop. The pages that follow include more details and renderings of this exciting opportunity!**

**To learn more, reach out to Jessica LeGare directly, at [twmanagement@ccrpllc.com](mailto:twmanagement@ccrpllc.com)**

**or if you're ready to contribute, please click [HERE](#).**

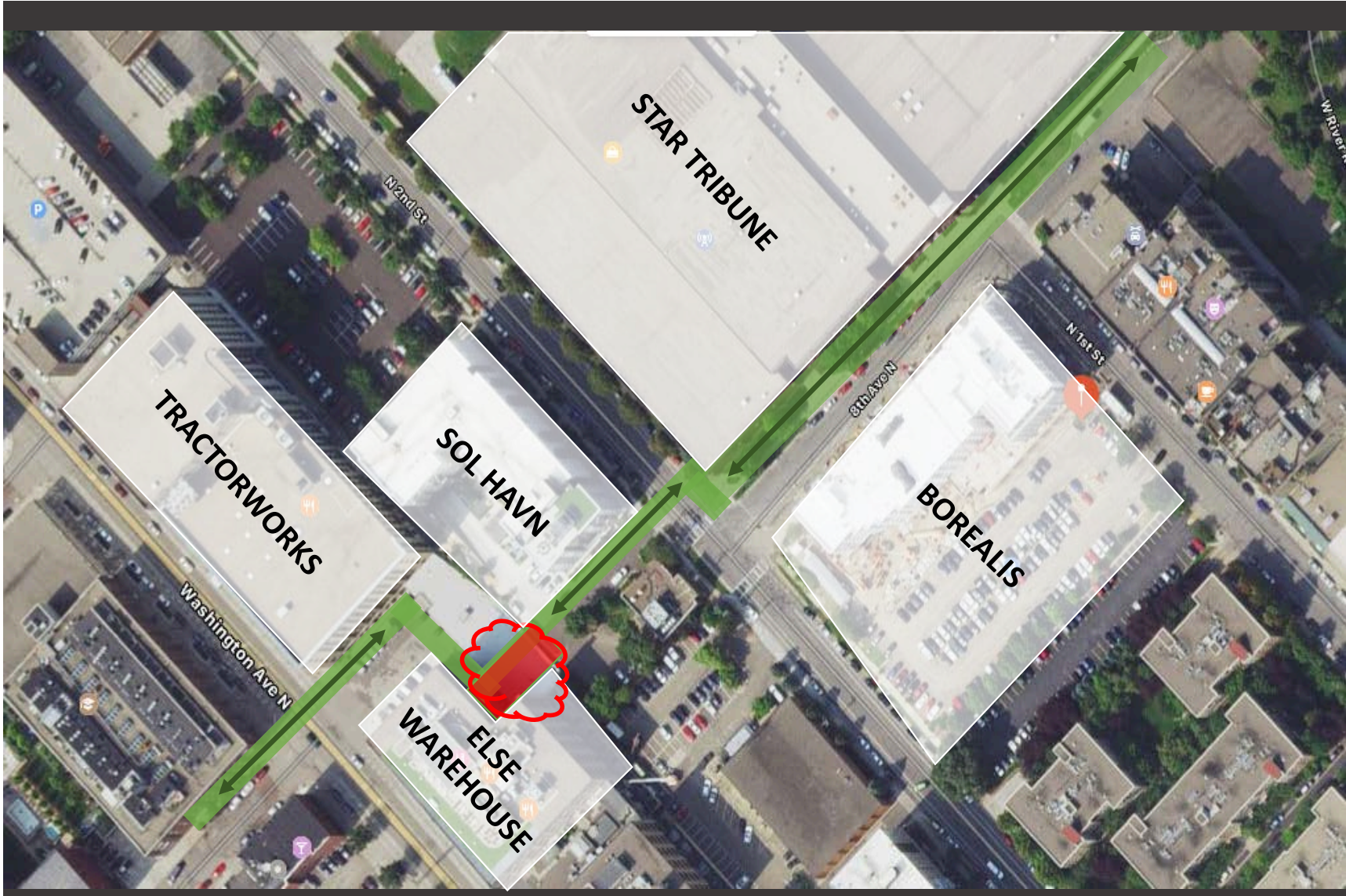


Current view of 8<sup>th</sup>  
Ave from  
Washington Avenue.

TractorWorks on the  
left and Else  
Warehouse on the  
right.

Solhavn, Borealis  
and Star Tribune  
located behind, on  
2<sup>nd</sup> Street.

Location of park connection - south of TractorWorks and behind Else Warehouse.



Aerial view of conceptual connectivity.

Green area represents conceptual connection for City of Mpls greenway via the River Connection Park.

Red area represents River Connection Park.

\*\*MPRB is working individually with developers and landowners to make small links whenever possible. Not all links may come together at once, but they are still investing in building and acquiring land for the future.\*\*



**Rendering of  
proposed River  
Connection  
Park.**

**View from  
Washington  
Avenue towards  
2<sup>nd</sup> Avenue.**

HGA



Rendering of  
proposed River  
Connection  
Park.

View from 2<sup>nd</sup>  
Avenue  
towards  
Washington  
Avenue.

HGA



Aerial view of  
proposed River  
Connection  
Park.

HGA



Interior view of proposed annex improvements and park.

HGA