

NORTH LOOP  
RIVER CONNECTION  
&  
PUBLIC PARK

**The TractorWorks Building – located at 800 Washington Ave. N. - is excited to announce that we're partnering with the North Loop Neighborhood Association and the City of Minneapolis Park Board to create an amazing opportunity for our vibrant, growing community.**

**This committee is hoping to develop a portion of the TractorWorks Building's property into a public pedestrian park! This incredible opportunity will provide public green space and also create a much needed connection from Washington Avenue N. to 2<sup>nd</sup> Street and the Mississippi River! As you can imagine, this will have an extremely positive impact on the community as well as the residents and businesses that live here, but it will require some help.**

**The total project cost is approximately \$1,000,000.00. The TractorWorks Building has contributed the land, development oversight and ongoing maintenance of the park. The Minneapolis Park Board has committed \$250,000 towards this project. In order to bring this concept to life this committee will need to raise funds to cover the remaining cost of the project. That's where you come in...**

**We are looking forward to teaming up with local developers, business and residents in order to raise the remaining funds. The North Loop Association is a 501c3 and takes a leadership role in community activities and fundraising efforts. Every dollar donated to this project will help to develop this park and improve the livability and accessibility of the North Loop. The pages that follow include more details and renderings of this exciting opportunity!**

**We are thrilled for what this project can do for the North Loop and—with your help—we hope to start as early as spring of 2020!**

**For any questions or contribution committals, feel free to reach out to Jessica LeGare directly, at [Jessica@ccrpilc.com](mailto:Jessica@ccrpilc.com).**



**View of 8<sup>th</sup> Ave  
from Washington  
Avenue.**

**TractorWorks is  
on the left and  
Else Warehouse is  
on the right.**

**Solhavn and  
Borealis condos  
are behind, on 2<sup>nd</sup>  
Street.**

**Park area would  
be located south  
of TractorWorks  
and behind Else  
Warehouse.**





Aerial view of  
proposed park area.

Green area represents  
City of Mpls greenway  
connection  
opportunities via the  
proposed park.

Red area represents  
proposed park area.





**Rendering of River  
Connection & Park.**

**View from Washington  
Avenue towards 2<sup>nd</sup>  
Avenue.**

HGA

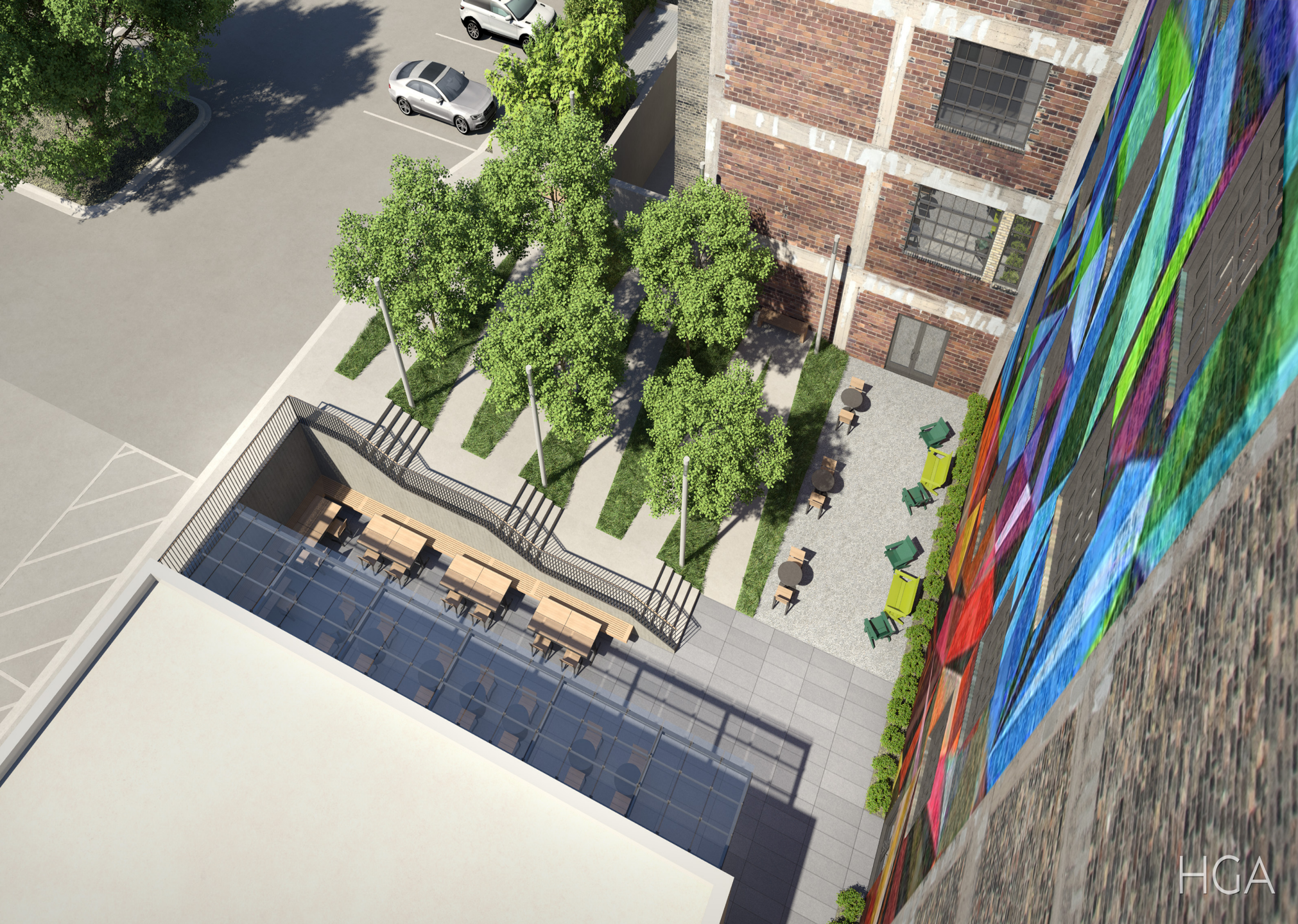




**Rendering of River  
Connection & Park.**

**View from 2<sup>nd</sup> Avenue  
towards Washington  
Avenue.**





Rendering of River  
Connection & Park.

Ariel representation of  
River Connection & Park.

HGA