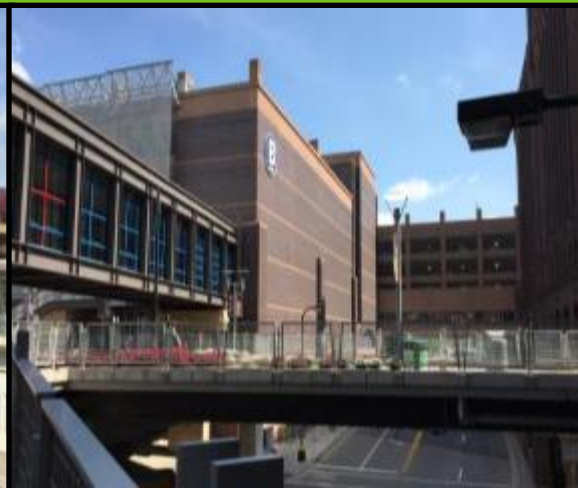


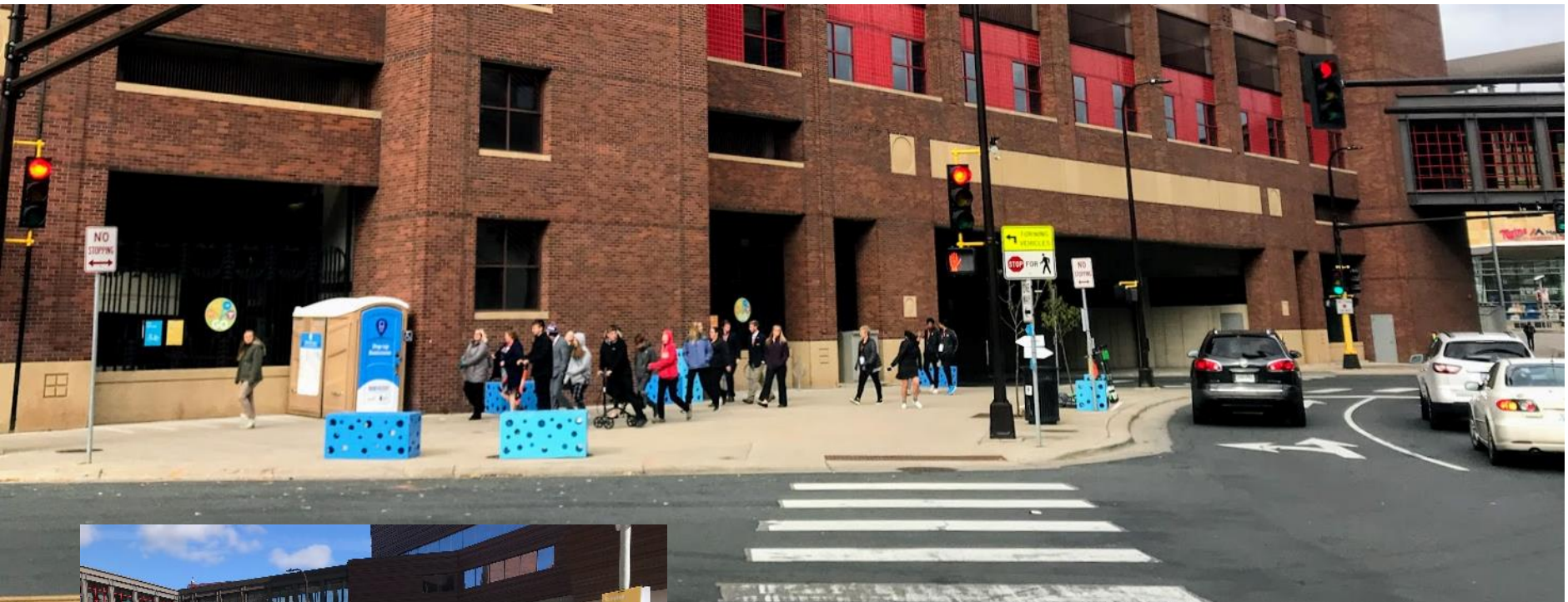
NuLoop Partners Member Meeting
11/19/2019



Public Art



Mobility Hub and Bathroom Pilot



Mobility Hub - Wayfinding

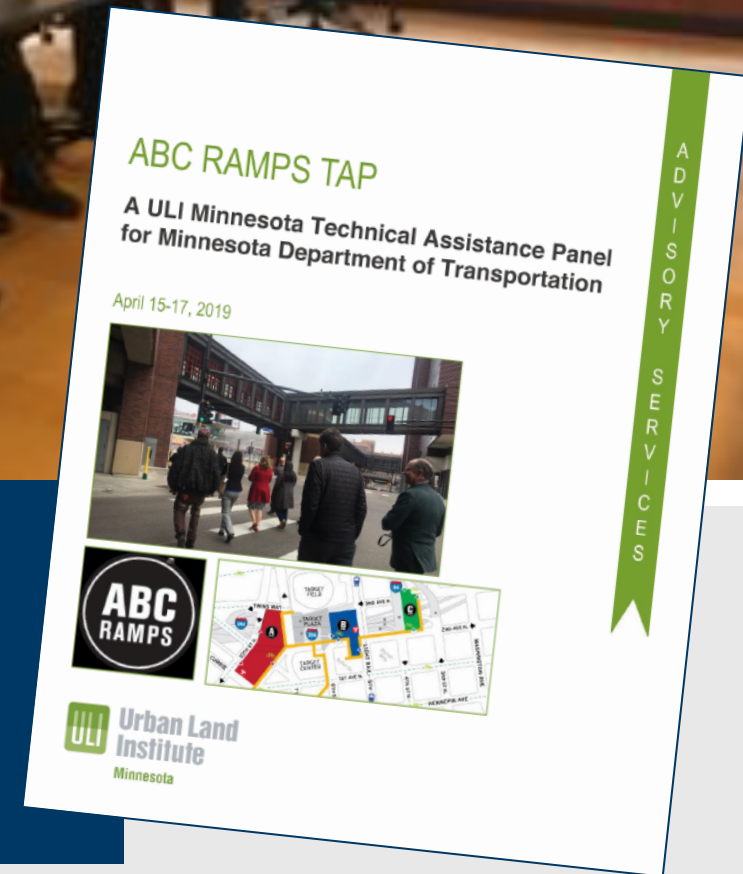


Wayfinding Pathway signs





Urban Land Institute Panel



<https://minnesota.uli.org/get-involved/advisory-services/technical-assistance-panel-tap/>

Panelists



TAP CHAIR

Max Musicant
Principal
The Musicant Group



Doug Arseneault
Public Affairs Administrator
Central Ohio Transit Authority



Bill Dossett
Executive Director
Nice Ride Minnesota



Lynette Dumalag
Senior Vice President
JLL Minneapolis



Meena Mangalvedhekar
Public Art Manager
Hennepin Theatre Trust



Chris Palkowitsch
Partner, Architect
BKV Group

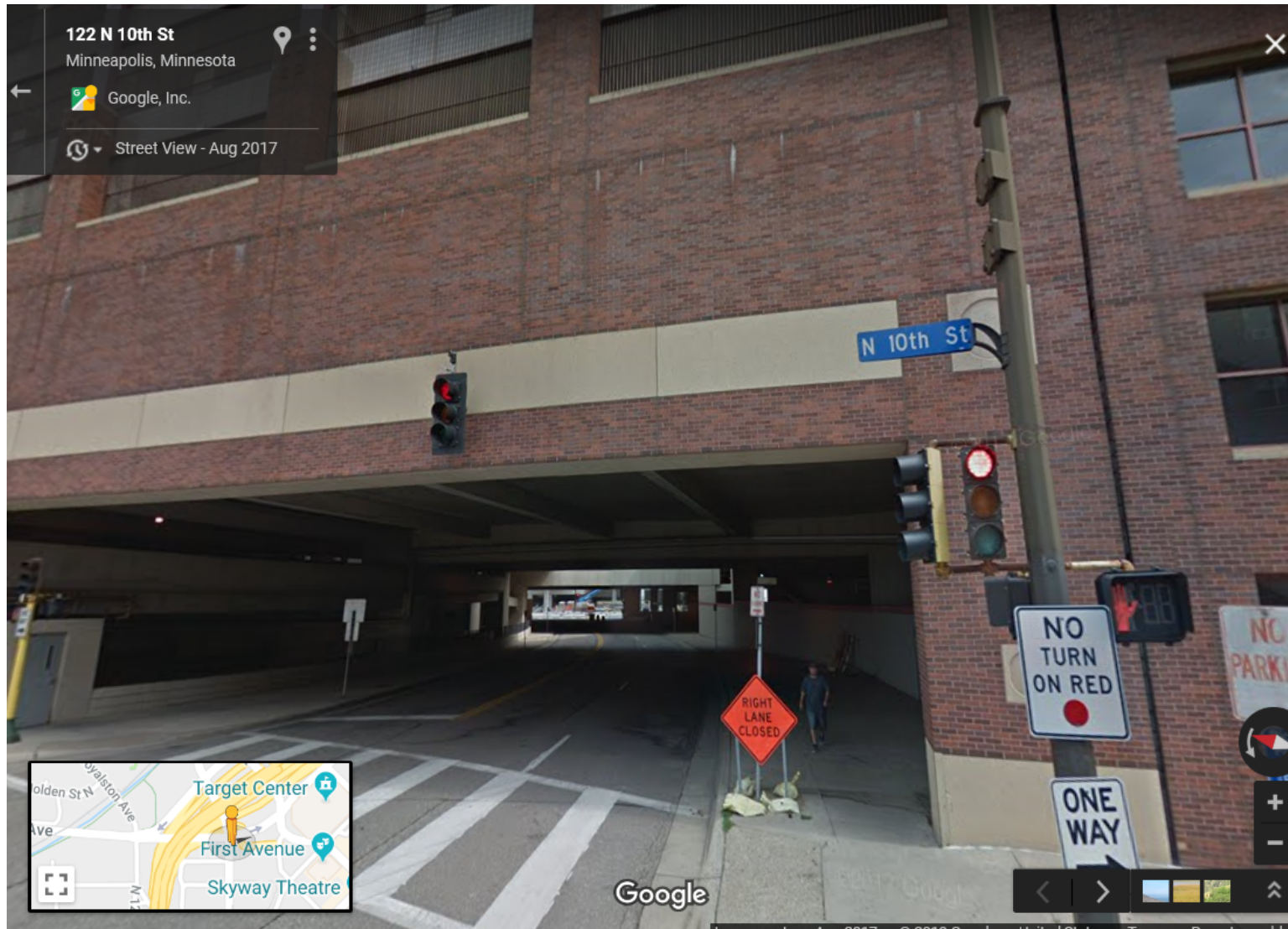


Chris Sherman
Senior VP, Operations &
Capital Markets
Sherman & Associates

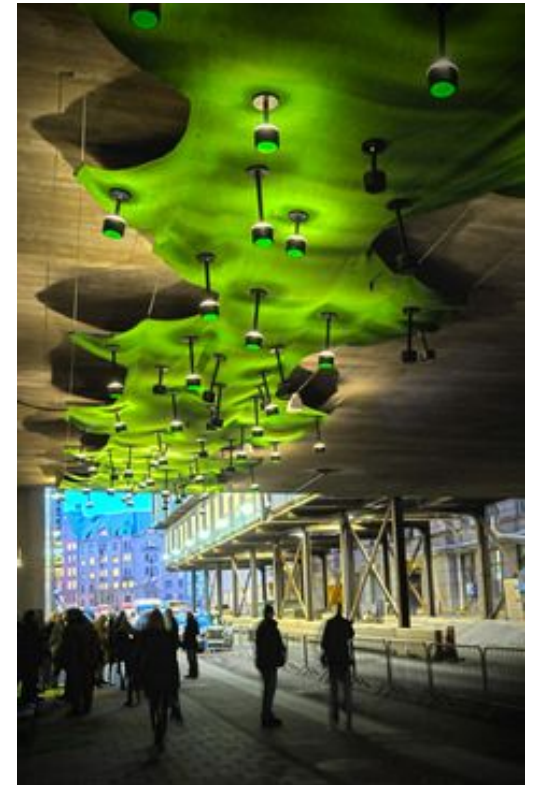


Charlie Zelle
Chairman
Jefferson Lines

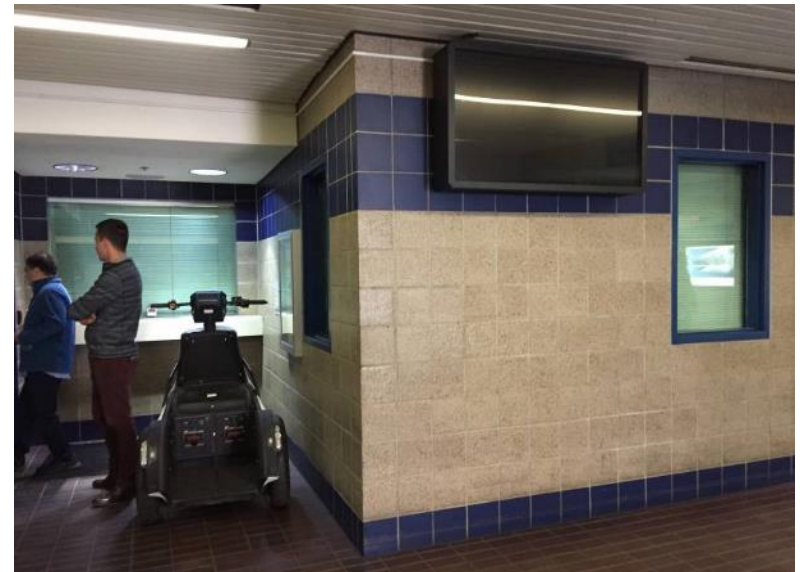
Glenwood – Shared Mobility



Glenwood - Ideas



Skyways and retail space



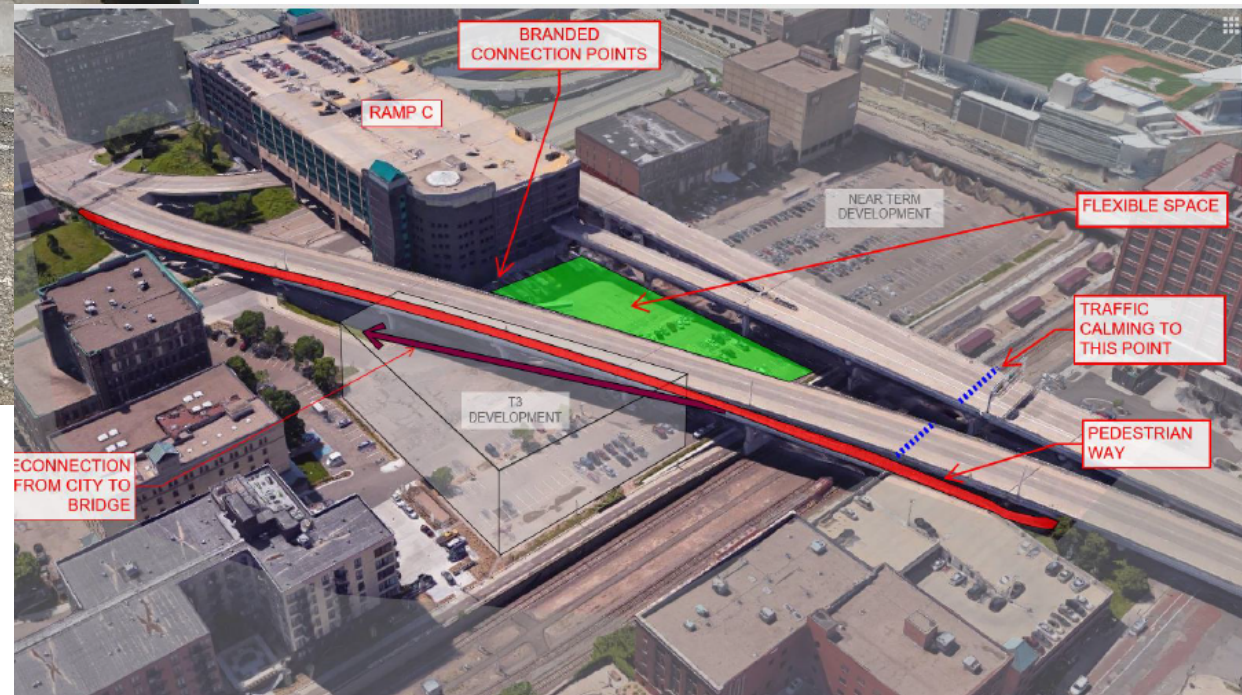
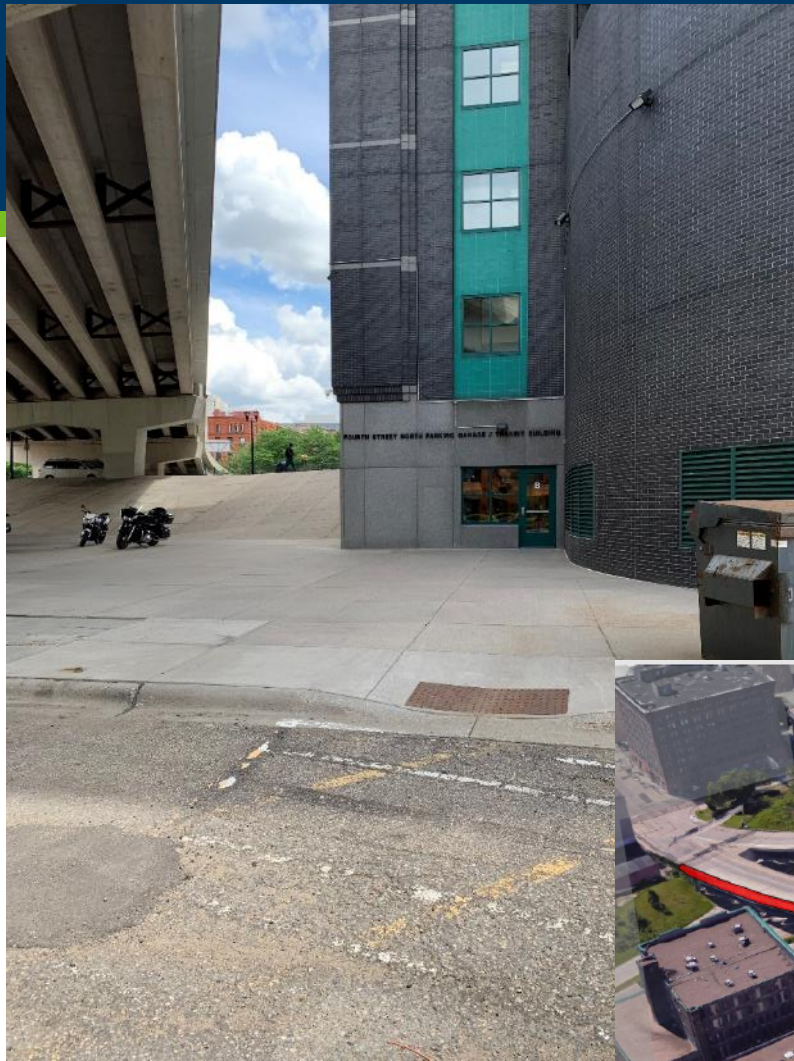
Ramp B Transit Area – Shared Mobility



Ramp B - Ideas



Ramp C - back entrance



Pedestrian Bridge to North Loop



RFP for ULI Projects

1. Mobility Hub Branding for ABC Ramps - Brand guides, brand promise
2. Complete Interior Design Plan for skyways (i.e. lighting, paint, floor. Public art) that supports the brand
3. 5-year Public Art plan for ABC Ramps
4. Preliminary design/engineering and cost estimates for :
 - a. **Glenwood under Ramp A**
 - Shared mobility center with car share, bike lockers, motorcycle parking, pedestrian level lighting and public art
 - b. **Ramp B Skyway and Transit area**
 - Coffee shop or grab and go retail and public bathrooms on skyway level
 - Remodeled transit area passenger and bus layover with space for other shared mobility, traveler information, and public art
 - c. **Ramp C – back entrance** adjacent to Hines development property
 - Landscape design, Wayfinding, Public art

Questions?

THANK YOU!

Lisa Austin

MnDOT, ABC Ramps Coordinator

Lisa.Austin@state.mn.us